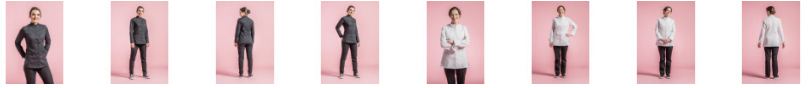




GENOVA

CUISINE RESTAURATION

Women's chef jacket with officer collar. Hidden snap buttons. Side slits. Can be customized with the C-YOU concept : 2.5 cm strip along each shoulder down to mid-arm. Fabric : 65% polyester 35% cotton. Available with short or long sleeves from size 00 to 6. Colors : WHITE / BLACK Men's version : MANTOVA



Size: XS T0 T1 T2 T3 T4 T5 T6

features: long sleeve

Washing tips:

